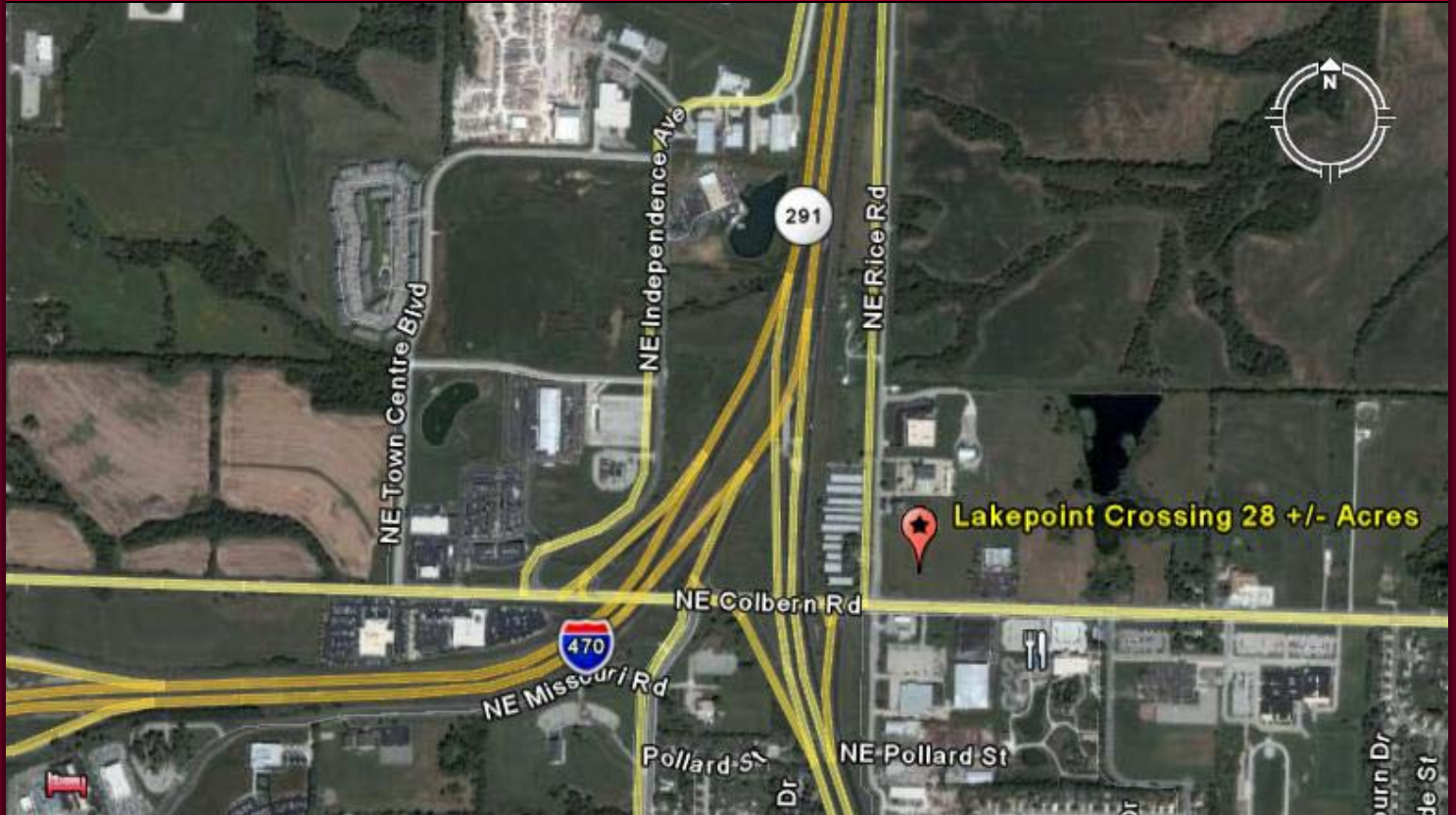


# COMMERCIAL DEVELOPMENT GROUND FOR SALE LEE'S SUMMIT, MISSOURI



- 28 +/- Acres Includes 5 Acre Lake
- Next To Post Office And Public Library
- High Visibility From I-470 And M-291 Highways
- 10 Acres Zoned C-P2, Balance Zoned Business Park
- All Public Utilities To Site



(816) 524-0550

FOR MORE INFORMATION  
CONTACT:

**Bernell Rice**

[brice@realtytrustgrp.com](mailto:brice@realtytrustgrp.com)

[www.realtytrustgrp.com](http://www.realtytrustgrp.com)

2008 Traffic Counts

I-470 & M-291 Hwy:

**59,864 Per Day**